

TITAN^{XT}

TOOLING RECOMMENDATION GUIDE

Concrete Surface Preparation

01

Polished Concrete System,
Toppings & Cementitious Terrazzo

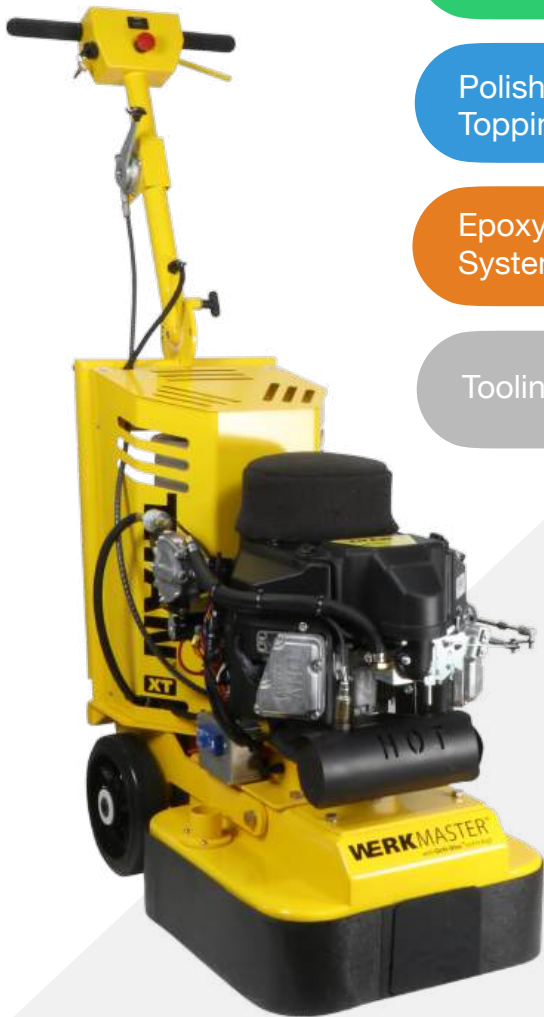
02

Epoxy Terrazzo Refinishing
System

03

Tooling Part Numbers

04





Glue & Mastic

Epoxy & Paint

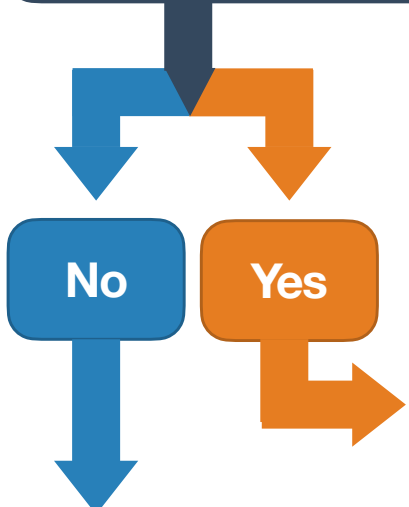
Thinset

CSP 3 Profile

Cure 'n Seal


Exposed Aggregate

Is your coating thicker than 1/8" (3mm)?

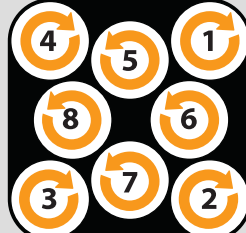


Configuration
PCD w/ TCD Shark (CW)
002-1350-00
Qty 12

Speed
450-800
PCD w/TCD Shark (CCW)
002-1349-00
Qty 12

IMPORTANT 

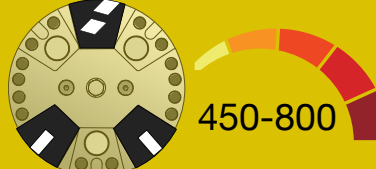
Tooling labelled **RIGHT** are CW (clockwise)
Tooling labelled **LEFT** are CCW (counter clockwise)



Determine the surface hardness using the MOHS test kit

MOHS 7.5-9

Hard Surface (Gold)

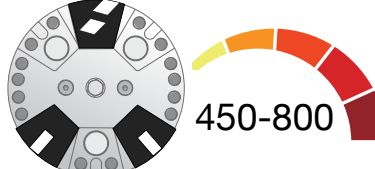


Configuration **Speed**
450-800

HD 1 Seg 16 Grit
Qty 16
HD 2 Seg Shark 16 Grit
Qty 8

MOHS 4.5-7.5

Medium Surface (White)

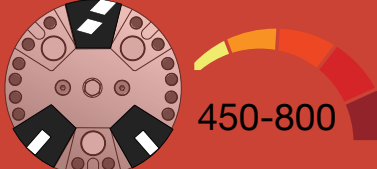


Configuration **Speed**
450-800

HD 1 Seg 16 Grit
Qty 16
HD 2 Seg Shark 16 Grit
Qty 8

MOHS 2-4.5

Soft Surface (Red)



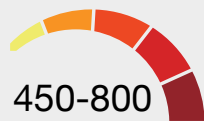
Configuration **Speed**
450-800

HD 1 Seg 16 Grit
Qty 16
HD 2 Seg Shark 16 Grit
Qty 8

Step 1 Metal Grinding - Achieve desired exposure



Configuration



450-800

Speed

HD TearDrop
30/40 Grit
Qty 24

HD TearDrop
70/80 Grit
Qty 24

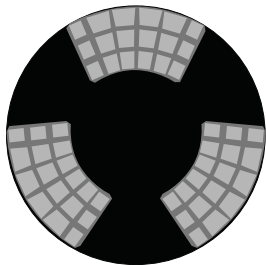
Refer to page 6 for Tooling Bond

Quick Tip

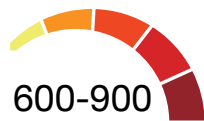
Start with highest grit (70/80) where possible and move to lower grit (30/40) if necessary.



Step 2 Transition Stage - Remove metal tooling marks



Configuration



600-900

Speed

Achromic Pro Plus
100 Grit
Qty 24

OR

Hybrid
100 Grit
Qty 40

Refer to page 6 for Tooling Bond

Quick Tip

Use **Achromic** tooling for Hard surfaces and **Hybrid** tooling for Soft surfaces to effectively remove scratches



Step 3 Densifying - Harden floor and prepare for polishing stage



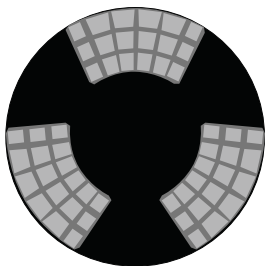
ULTRAdensifil
200-700 sq ft per gal coverage

Quick Tip

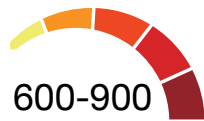
This 2 in 1 product can be used as a pore and crack filler. Ensure all tool marks are removed prior to densifying.



Step 4 Polishing - Bring floor to desired level of shine



Configuration



600-900

Speed

Matte
ULTRASHINE Pro Plus Resin
200 Grit
Qty 24

Semi-Gloss
ULTRASHINE Pro Plus Resin
200-800 Grit
Qty 24 of each

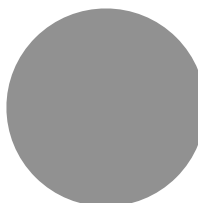
High-Gloss
ULTRASHINE Pro Plus Resin
200-1500 Grit
Qty 24 of each

Step 5 - Seal & Protect



ULTRAguard Sealer
500-700 sq ft per gal coverage.
Always test in an inconspicuous area to verify compatibility of substrate to sealer.

Step 6 Burnishing

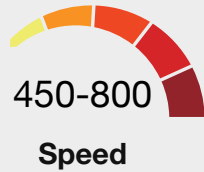


Burnish floor with clean or new burnishing pads to achieve a high heel finish (optional stage). Recommend using a high speed burnisher

Step 1 Metal Grinding - Achieve desired exposure



Configuration



HD TearDrop
30/40 Grit
Qty 24

HD TearDrop
70/80 Grit
Qty 24

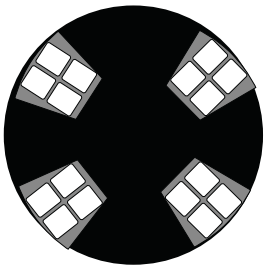
Refer to page 6 for Tooling Bond

Quick Tip

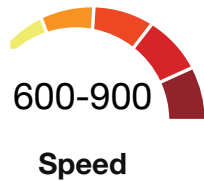
Start with highest grit (70/80) where possible and move to lower grit (30/40) if necessary.



Step 2 Transition Stage - Remove metal tooling marks



Configuration



Hybrid
100 Grit
Qty 32 -40

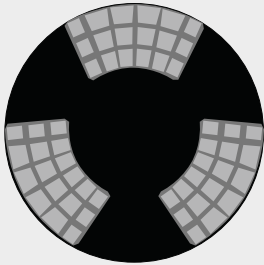
Refer to page 6 for Tooling Bond

Quick Tip

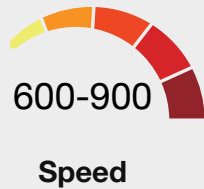
Consider water mist to help remove scratches. This can also be the first step in the refinishing process.



Step 3 Polishing - Bring floor to desired level of shine



Configuration



Matte
ULTRASHINE Pro Plus Resin
200 Grit
Qty 24

Semi-Gloss
ULTRASHINE Pro Plus Resin
200-800 Grit
Qty 24 of each

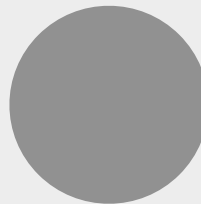
High-Gloss
ULTRASHINE Pro Plus Resin
200-1500 Grit
Qty 24 of each

Step 4 - Seal & Protect



ULTRAguard Sealer
500-700 sq ft per gal coverage.
Always test in an inconspicuous area to verify compatibility of substrate to sealer.

Step 5 Burnishing



Burnish floor with clean or new burnishing pads to achieve a high heel finish (optional stage). Recommend using a high speed burnisher

Name	Part Number
Surface Prep	
PCD with TCD Shark (Clockwise)	002-1350-00
PCD with TCD Shark (Counter-Clockwise)	002-1349-00
1 Seg HD 16 Grit (Gold, Hard Surface)	002-1487-00
1 Seg HD 16 Grit (White, Medium Surface)	002-1415-00
1 Seg HD 16 Grit (Red, Soft Surface)	002-1418-00
2 Seg Shark HD 16 Grit (Gold, Hard Surface)	002-1493-00
2 Seg Shark HD 16 Grit (White, Medium Surface)	002-1426-00
2 Seg Shark HD 16 Grit (Red, Soft Surface)	002-1427-00
TearDrop HD 30/40 Grit (Gold, Hard Surface)	002-1482-00
TearDrop HD 30/40 Grit (White, Medium Surface)	002-1500-00
TearDrop HD 30/40 Grit (Red, Soft Surface)	002-1506-00
TearDrop HD 70/80 HD Grit (Gold, Hard Surface)	002-1483-00
TearDrop HD 70/80 Grit (White, Medium Surface)	002-1501-00
TearDrop HD 70/80 Grit (Red, Soft Surface)	002-1507-00
Transitional	
PRO PLUS Achromic Resin 100 Grit (Medium & Hard Surfaces)	003-0397-00
Achromic Resin 200 Grit (Medium & Hard Surfaces)	003-0248-00
Hybrid Resin 100 Grit (Soft Surface)	003-0223-01
Polishing	
UltraShine Pro Plus Resin 200 Grit	003-0381-00
UltraShine Pro Plus Resin 400 Grit	003-0382-00
UltraShine Pro Plus Resin 800 Grit	003-0383-00
UltraShine Pro Plus Resin 1500 Grit	003-0384-00
7" Diamond Pad 3000 Grit	011-0062-00
7" Pink Nylon Pad (Buffing Pad)	011-0077-00
Chemicals	
ULTRAdensifil (Densifier) 1 QT	006-0231-00
ULTRAdensifil (Densifier) 1gal	006-0230-00
ULTRAdensifil (Densifier) 2.5gal	006-0228-00
ULTRAdensifil (Densifier) 5gal	006-0229-00
ULTRAguard (Sealer) 1QT	006-0130-04
ULTRAguard (Sealer) 1gal	006-0152-00
ULTRAguard (Sealer) 2.5gal	006-0130-01
ULTRAguard (Sealer) 5gal	006-0130-00

MOHS 7.5-9

Hard Surface (Gold)

MOHS 4.5-7.5

Medium Surface (White)

MOHS 2-4.5

Soft Surface (Red)