

MACHINE TOOLING RECOMMENDATION GUIDE

RAIDER PROPANE

Concrete Surface Preparation **01**

Polished Concrete System
Toppings & Cementitious Terrazzo **02**

Epoxy Terrazzo Refinishing
System **03**

Tooling Part Numbers **04**





Glue & Mastic

Epoxy & Paint

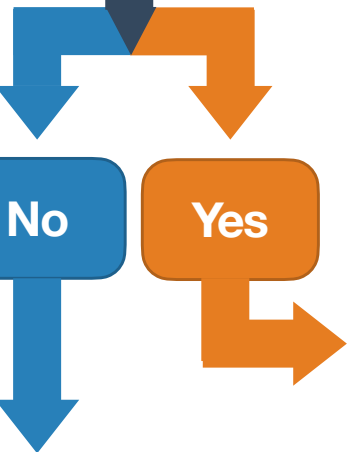
Thinset

CSP 3 Profile

Cure 'n Seal

Exposed Aggregate

Is your coating thicker than 1/8" (3mm)?



450-800

Plate Configuration

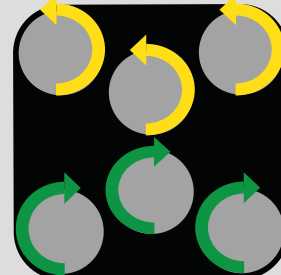
Speed Range

PCD w/ TCD Shark (CW)
002-1350-00
Qty 12

PCD w/TCD Shark (CCW)
002-1349-00
Qty 6

IMPORTANT

Tooling labelled RIGHT are CW (clockwise)
Tooling labelled LEFT are CCW (counter clockwise)



Determine the surface hardness using the MOHS test kit

MOHS 7.5-9

Hard Surface (Gold)

450-800

Plate Configuration

Speed Range

HD Single Seg 16 Grit
002-1487-00
Qty 12

HD 2 Seg Shark 16 Grit
002-1493-00
Qty 6

MOHS 4.5-7.5

Medium Surface (White)

450-800

Plate Configuration

Speed Range

HD Single Seg 16 Grit
002-1415-00
Qty 12

HD 2 Seg Shark 16 Grit
002-1426-00
Qty 6

MOHS 2-4.5

Soft Surface (Red)

450-800

Plate Configuration

Speed Range

HD Single Seg 16 Grit
002-1418-00
Qty 12

HD 2 Seg Shark 16 Grit
002-1427-00
Qty 6

Step 1

Metal Grinding - Prepare surface to achieve desired exposure



Configuration



Speed

HD TearDrop
30/40 Grit
Qty 18

HD TearDrop
70/80 Grit
Qty 18

Refer to page 7 for Tooling Bond

Quick Tip

For best results consider making North/South and East/West passes on each grit.



Step 2

Transition Stage - Remove metal tooling marks and prepare for densifying



Configuration



Speed

Achromic
100 Grit
Qty 24

OR

Hybrid
100 Grit
Qty 24

Quick Tip

Use **Achromic** tooling for Hard or Medium surfaces. In most cases start with 100G. Use **Hybrid** tools on floors 4 and below.



Step 3

Densifying - Harden floor and prepare for polishing stage



ULTRAdensifil
200-700 sq ft per gal coverage

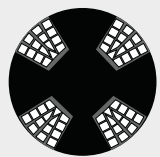
Quick Tip

This 2 in 1 product can be used as a pore and crack filler. Ensure all tool marks are removed prior to densifying.



Step 4

Polishing - Bring floor to desired level of shine



Configuration



Speed

Matte
ULTRASHINE Resin
200 Grit
Qty 24

Semi-Gloss
ULTRASHINE Resin
200-800 Grit
Qty 24 of each

High-Gloss
ULTRASHINE Resin
200-1500 Grit
Qty 24 of each

Step 5

Sealing - Protect and seal polished concrete surface



ULTRAguard Sealer
500-700 sq ft per gal coverage

Quick Tip

Refer to TDS for application directions. Always test in an inconspicuous area to verify compatibility of substrate to sealer.



Step 6

Burnishing - Achieve maximum shine and polish



Configuration



Speed

6" Nylon Pad
Qty 6

Quick Tip

Burnish floor with clean or new Buff Pads to achieve maximum shine. **On bigger jobs use a high speed propane or electric burnisher**



Step 1



Configuration



Speed

STD TearDrop

70/80 Grit
Qty 36

Refer to page 7 for Tooling Bond

Quick Tip

For best results consider making North/South and East/West passes on each grit.

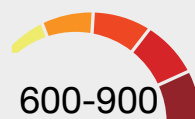


Step 2

Transition Stage - Remove metal tooling marks and prepare for densifying



Configuration



Speed

HYBRID

100 Grit
Qty 24

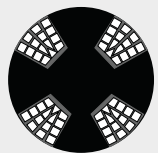
Quick Tip

Remove all tooling marks using the Achromic tooling before moving on to the next step.



Step 3

Polishing - Bring floor to desired level of shine



Configuration



Speed

Matte
ULTRASHINE
Resin
200 Grit
Qty 24

Semi-Gloss
ULTRASHINE
Resin
200-800 Grit
Qty 24 of each

High-Gloss
ULTRASHINE
Resin
200-1500 Grit
Qty 24 of each

Step 4

Sealing - Protect and seal polished concrete surface



ULTRAguard Sealer
500-700 sq ft per gal coverage

Quick Tip

Refer to TDS for application directions. Always test in an inconspicuous area to verify compatibility of substrate to sealer.



Step 5

Burnishing - Achieve maximum shine and polish



Configuration



Speed

6" Nylon Pad
Qty 6

Quick Tip

Burnish floor with clean or new Pink Pads to achieve maximum shine. **On bigger jobs use a high speed propane or electric burnisher**



Name	Part Number
Surface Prep	
PCD with TCD Shark (Clockwise)	002-1350-00
PCD with TCD Shark (Counter-Clockwise)	002-1349-00
HD Teardrop 16 Grit (Gold, Hard Surface)	002-1484-00
HD Teardrop 16 Grit (White, Medium Surface)	002-1502-00
HD Teardrop 16 Grit (Red, Soft Surface)	002-1505-00
2 Seg Shark STD 16 Grit (Gold, Hard Surface)	002-1493-00
2 Seg Shark HD16 Grit (White, Medium Surface)	002-1426-00
2 Seg Shark HD 16 Grit (Red, Soft Surface)	002-1427-00
HD Teardrop 30/40 Grit (Gold, Hard Surface)	002-1591-00
HD Teardrop 30/40 Grit (White, Medium Surface)	002-1500-00
HD Teardrop 30/40 Grit (Red, Soft Surface)	002-1506-00
HD Teardrop 70/80 Grit (Gold, Hard Surface)	002-1592-00
HD Teardrop 70/80 Grit (White, Medium Surface)	002-1500-00
HD Teardrop 70/80 Grit (Red, Soft Surface)	002-1501-00
Transitional	
Achromic Resin 100 Grit (Medium & Hard Surfaces)	003-0247-00
Achromic Resin 200 Grit (Medium & Hard Surfaces)	003-0248-00
Hybrid Resin 100 Grit (Soft Surface)	003-0223-01
Polishing	
UltraShine Resin 200 Grit	003-0376-00
UltraShine Resin 400 Grit	003-0377-00
UltraShine Resin 800 Grit	003-0378-00
UltraShine Resin 1500 Grit	003-0379-00
6" Diamond Pad 3000 Grit	011-0058-00
6" Nylon Pad (Buffing Pad)	011-0044-01
Chemicals	
ULTRAdensifil (Densifier) 1 QT	006-0231-00
ULTRAdensifil (Densifier) 1gal	006-0230-00
ULTRAdensifil (Densifier) 2.5gal	006-0228-00
ULTRAdensifil (Densifier) 5gal	006-0229-00
ULTRAguard (Sealer) 1QT	006-0130-04
ULTRAguard (Sealer) 1gal	006-0152-00
ULTRAguard (Sealer) 2.5gal	006-0130-01
ULTRAguard (Sealer) 5gal	006-0130-00

MOHS 7.5-9

Hard Surface (Gold)

MOHS 4.5-7.5

Medium Surface (White)

MOHS 2-4.5

Soft Surface (Red)